

# MARTCARE® GOGGLE INDIRECT VENT

PRODUCT CODE: AGC020-301-300 (ANTI-MIST: AGC021-201-300)

COMPACT & LIGHTWEIGHT GOGGLE DESIGNED TO PROVIDE DUST & LIQUID PROTECTION

TECHNICAL  
SPECIFICATION

MARTCARE® RANGE

## INSTRUCTIONS FOR USE

In use ensure that the safety goggles fit comfortably and securely on the head

Ensure that the safety goggles are in place, before entering the hazard area

## MARTCARE® ATTRIBUTES

Compact

Lightweight

Vented Body

PVC Frame

Polycarbonate Lens

High resistance to impact from flying particles



## MATERIALS

Body: PVC

Lens: Polycarbonate

Elastic Headband: Polyester Covered Rubber Thread

## MARTCARE® FEATURES & PERFORMANCE

Lens and body offer protection against medium energy high-speed particles at 120 m/s (270mph) and protection against high-speed particles at extremes of temperature

The optical qualities of the lens comply with the requirements of optical class 1 (highest)

The body offers protection against large dust particles, and liquid droplets

This version of the goggle is also available with a lens that has anti-mist properties

## CLEANING & MAINTENANCE

The goggles may be cleaned with soap and warm water and dried with a soft cloth

Do not clean with chemical or abrasive cleaners

Store in packaging provided, out of direct sunlight, away from chemicals and not exposed to extremes of temperature



## CONFORMITY

Conforms to EN 166 3.4.B / CE ANSI Z87.1

EC Certificate Number 682745, issued by BSi

DISCLAIMER: Information presented within this technical specification was correct on date of issue. Information may be subject to change without notice as part of ongoing product improvement and development. To confirm any specific piece of information shown is current please email [technical@jsp-safety.com](mailto:technical@jsp-safety.com)



MANUFACTURING FOR SAFETY  
[WWW.JSPSAFETY.COM](http://WWW.JSPSAFETY.COM)

UKSALES@JSPSAFETY.COM  
TEL: +44 (0)1993 826050



# MARTCARE® GOGGLE INDIRECT VENT

PRODUCT CODE: AGC020-301-300 (ANTI-MIST: AGC021-201-300)

COMPACT & LIGHTWEIGHT GOGGLE DESIGNED TO PROVIDE DUST & LIQUID PROTECTION

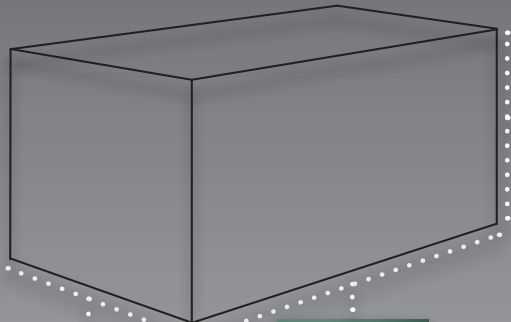
**TECHNICAL  
SPECIFICATION**

**MARTCARE® RANGE**

## DIMENSIONS OF PACKAGING

Quantity: 200

Weight: 14.9kg (Approx.)



**HEIGHT:**  
455mm

**WIDTH:**  
435mm

**LENGTH:**  
630mm



## DIMENSIONS OF GOGGLE

Lens Thickness: 3mm

Lens Size (Vertical): 60mm

Lens Size (Horizontal): 140mm

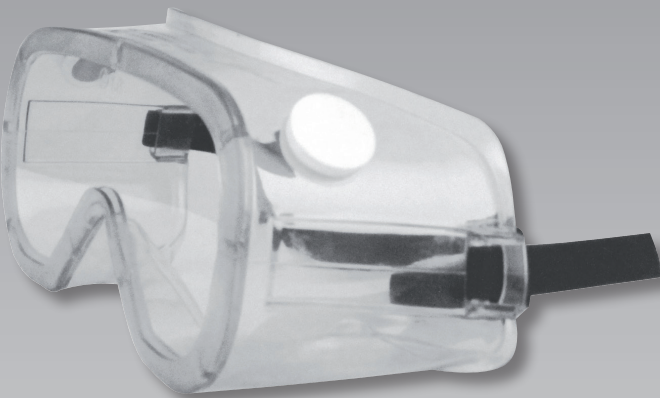
Overall Length (lens edge): 182mm (Approx.)

Strap Length: 240mm (Approx.)

Height: 75mm

Width: 88mm

Weight: 66g (Approx.)



## MARTCARE COLOURS

Body: Clear

Lens: Clear

## MARKINGS

Body: EN 166 3.4.B

Standard Lens: 1.B ↑

Anti-Mist Lens: 1.B ↑

## LIMITATIONS OF USE

Protection will only be offered if the goggles are fitted correctly

If the lens become scratched or damaged they should be replaced, likewise if the goggles are subjected to severe impact they should be replaced immediately

Do not apply paint, solvents, adhesives or self-adhesive labels, except in accordance with instructions from the manufacturer

The goggle body, when in contact with the skin may cause allergic reactions to susceptible individuals. If this occurs leave the hazard area, remove the eye shield and seek medical advice

The attention of users is also drawn to the dangers of modifying or removing any of the original component parts, other than as recommended by the manufacturer

DISCLAIMER: Information presented within this technical specification was correct on date of issue. Information may be subject to change without notice as part of ongoing product improvement and development. To confirm any specific piece of information shown is current please email [technical@jpsafety.com](mailto:technical@jpsafety.com)



MANUFACTURING FOR SAFETY  
[WWW.JSPSAFETY.COM](http://WWW.JSPSAFETY.COM)

UKSALES@JSPSAFETY.COM  
TEL: +44 (0)1993 826050



Issued 15/10/2020 - 4